



Scottish  
Forestry  
Coilltearachd  
na h-Alba

# Timber Transport in Scotland: The Role of the Timber Transport Forum

Jason Hubert: Head of Forestry Sector Development

09 May 2025

Scottish Forestry is the Scottish Government agency responsible for forestry policy, support and regulation.  
S e Coilltearachd na h-Alba a bhuidheann-ghnìomha aig Riaghaltas na h-Alba a tha an urra poileasaidh, taic agus riaghladh do choilltearachd



Scottish Government  
Riaghaltas na h-Alba



Scottish  
Forestry

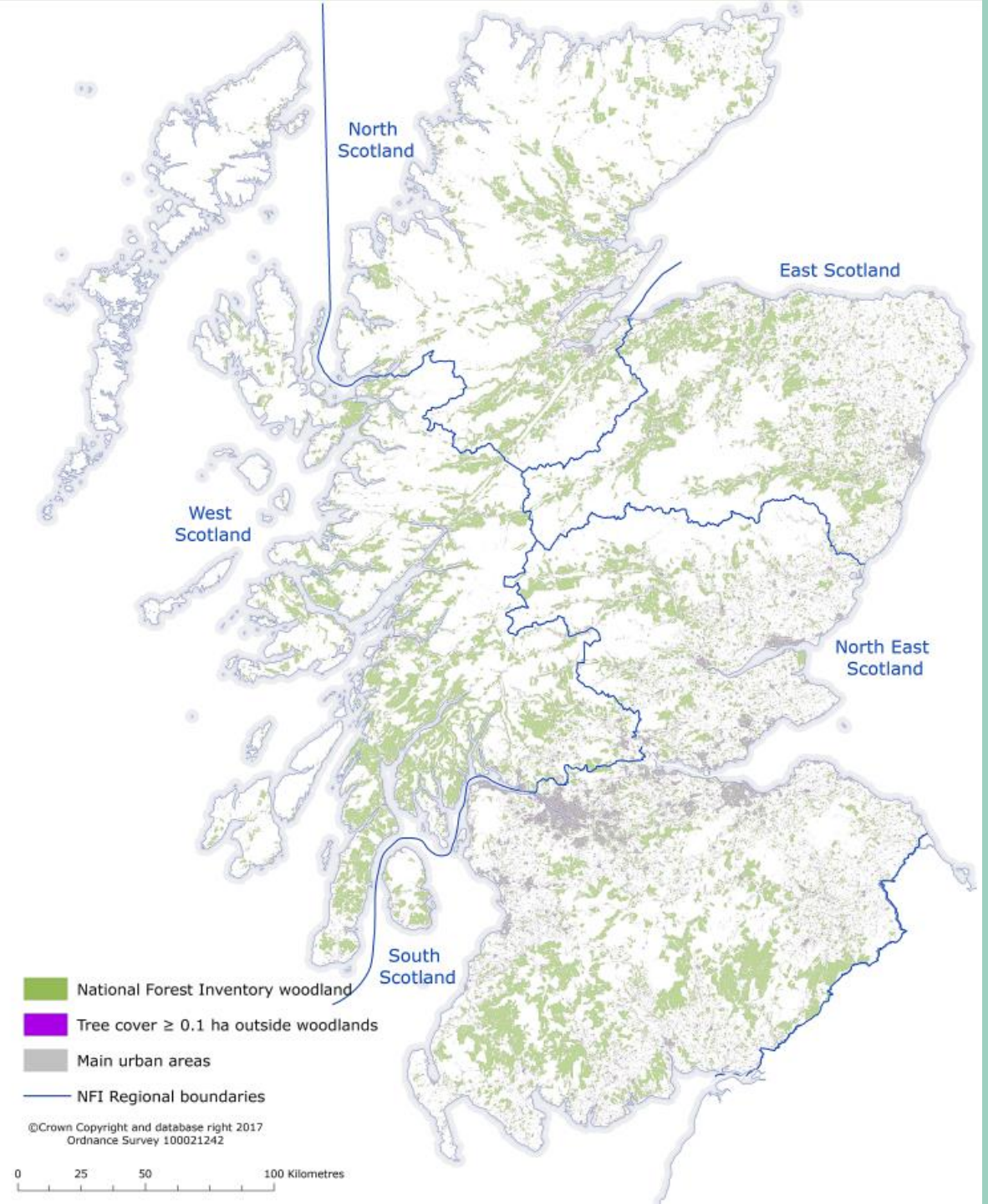
Coilltearachd  
na h-Alba

Woodland Cover in 1919 = 5%

Woodland Cover in 2019 = 19%

Trees planted in the  
1970s and 1980s now  
need to be felled

[forestry.gov.scot](https://forestry.gov.scot)



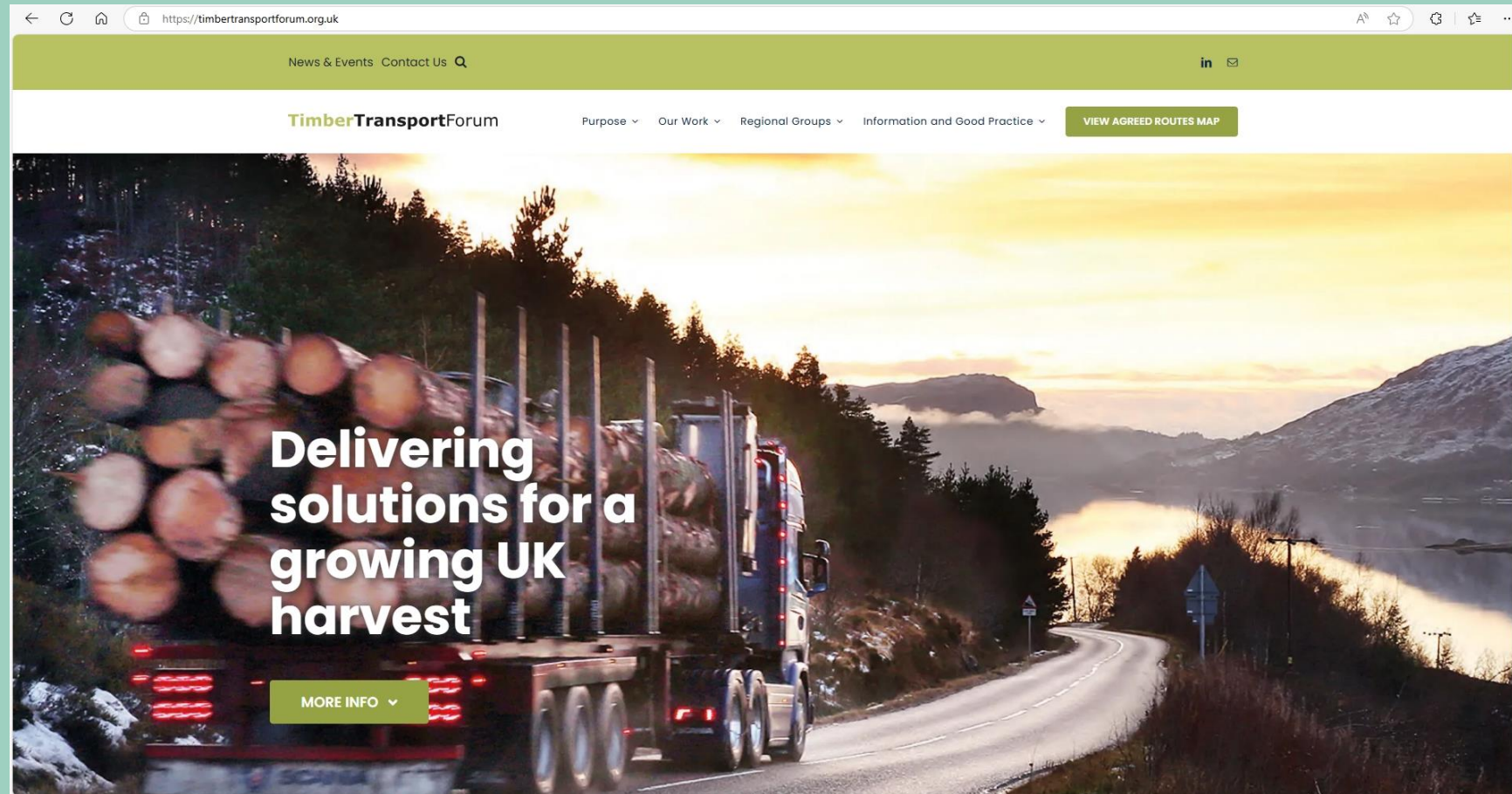


Scottish  
Forestry

Coilltearachd  
na h-Alba

# What is the Timber Transport Forum?

- A partnership of the forestry and timber industries, local government, national government agencies, timber hauliers and road and freight associations
- 11 Regional Timber Transport Groups at local authority level, each a local partnership of public and private organisations



[timbertransportforum.org.uk](https://timbertransportforum.org.uk)

[forestry.gov.scot](https://forestry.gov.scot)





Scottish  
Forestry

Coilltearachd  
na h-Alba

# What does the TTF aim to do?

We seek to minimise the impact of timber transport on the public road network, on local communities and on the environment. The Forum promotes voluntary measures to improve the sustainability of timber transport:

- Managing timber traffic to sustain the road network and minimise disruption
- Maintaining and improving minor roads used for timber haulage
- Moving timber by other modes of transport where possible



Photo: Creel Consulting





Scottish  
Forestry

Coilltearachd  
na h-Alba

# Agreed Routes Map







Scottish  
Forestry

Coilltearachd  
na h-Alba

# The Regional Groups

7 Groups in Scotland with the following remit:

- to collect information relating to current and future timber traffic;
- identify priorities for maintenance, upgrades and new investments in timber transport infrastructure;
- to explore and promote the potential for increased use of rail and water modes;
- to develop and maintain a system of agreed timber transport routes;
- to work through partnerships to resolve timber transport problems and avoid new ones arising, and



**Photo: Creel Consulting**



Scottish  
Forestry

Coilltearachd  
na h-Alba

# Strategic Timber Transport Fund

## Strategic Timber Transport Fund

The Strategic Timber Transport Fund is available to projects that minimise the impact of timber transportation on Scotland's fragile rural and public roads. Projects to date include:

- the development of forest roads that bypass communities
- the development of boat and rail haulage facilities
- the upgrade of vital public roads

[forestry.gov.scot](https://forestry.gov.scot)



**Photo: Dennis Coy, Glennon Brothers**





Scottish  
Forestry

Coilltearachd  
na h-Alba

# TimberLINK



[forestry.gov.scot](http://forestry.gov.scot)

Photos: Creel Consulting

BRAVE VALUES & BEHAVIOURS





Scottish  
Forestry

Coilltearachd  
na h-Alba

# Strategic Timber Transport Scheme



Bridge over the Kinnel Burn.

Improving timber transport case study

Annandale and Ae Timber Haulage Route

[forestry.gov.scot](https://forestry.gov.scot)





Scottish  
Forestry / Coilltearachd  
na h-Alba

Thank You

Any Questions?

[forestry.gov.scot](https://forestry.gov.scot)